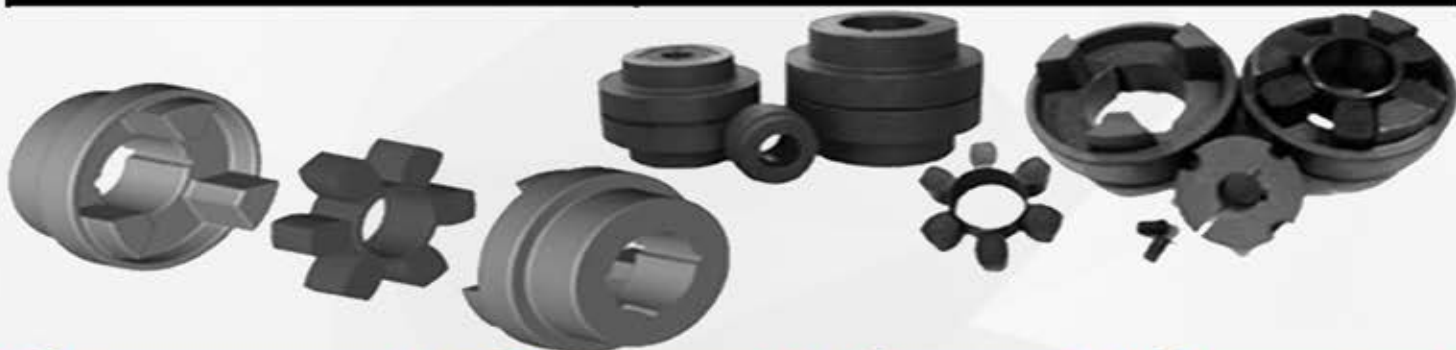
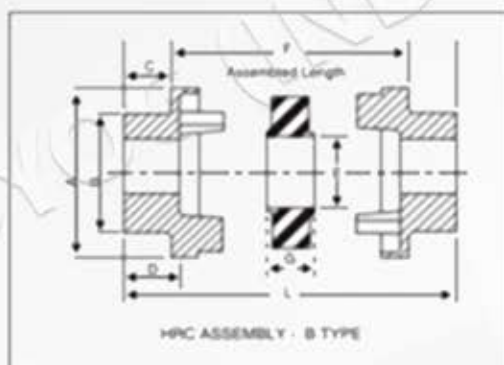
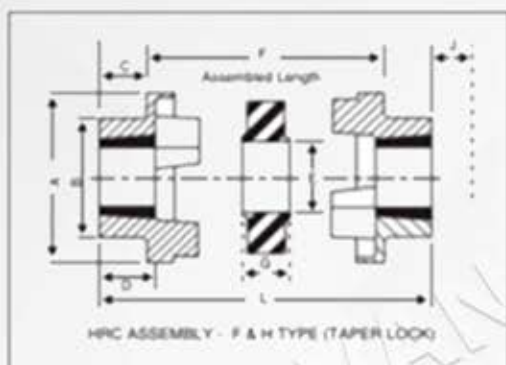
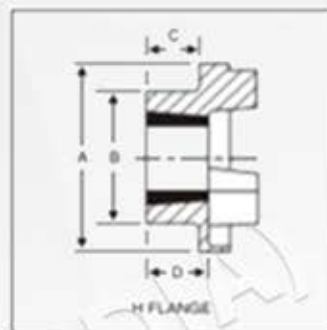
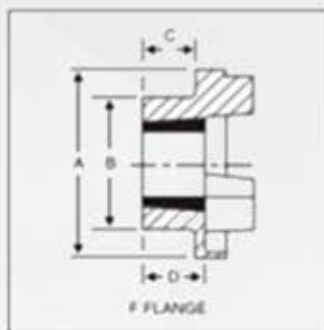


## JAW Couplings (HRC - Series)

Coupling Size	Coupling with 'B' Flanges		Coupling with 'F/H' Taper Lock Flanges			Spare Elements
	Pilot Bore	Finished Bore & Key way	Without TLB	With TLB	TLB Size	
	Rs.	Rs.	Rs.	Rs.	Rs.	Rs.
HRC-70	745	945	700	1160	1008	145
HRC-90	1120	1365	1115	1600	1108	225
HRC-110	1900	1985	1795	2415	1210	365
HRC-130	2415	2720	2155	2860	1610	440
HRC-150	3025	3415	2655	3620	2012	525
HRC-180	4540	5065	3790	5115	2517	625
HRC-230	7345	8080	6765	8595	3020	840
HRC-280	13270	14595	11765	15080	3525	1150
						SP/F



## JAW Couplings (HRC - Series)



Size	Power at 100 rpm kW	Type F & H							Type B							A	B	E	G	Power Ratings 100 rev/ min
		TLB Size	Min Bore	Max. Bore	C	D	F	L	J*	Min Bore	Max. Bore	C	D	F	L					
70	0.33	1008	09	25	20.0	24	26.0	66.0	29	10	32	20	24	26.0	66.0	69	60	31	18.0	0.33
90	0.84	1108	09	28	19.5	24	31.5	70.5	29	10	35	26	30	30.5	82.5	85	70	32	22.5	0.84
110	1.68	1210	11	32	18.5	27	46.0	83.0	38	10	55	37	45	45.0	119.0	112	100	45	29.0	1.68
110A	1.68	1610	14	42	18.5	27	46.0	83.0	38	-	-	-	-	-	-	112	100	45	29.0	1.68
130	3.30	1610	14	42	18.0	27	54.0	90.0	38	14	60	47	56	54.0	148.0	130	105	50	36.0	3.30
150	6.28	2012	14	50	23.5	34	61.0	108.0	44	19	70	50	60	60.0	160.0	150	115	62	40.0	6.28
180	9.95	2517	16	60	34.5	47	74.0	143.0	48	35	80	58	70	73.0	189.0	180	125	77	49.0	9.95
230	20.90	3020	25	75	39.5	53	86.5	165.5	55	38	100	77	90	85.5	239.5	225	155	99	59.5	20.90
280	33.00	3525	35	90	51.0	67	106.5	208.5	67	48	115	90	105	104.5	284.5	275	206	119	74.5	33.00

\* J - Wrench clearance to allow for tightening and loosening the bush on the shaft.